

Vacation Accommodation Southern Staying South Africa

Image not found
QR code
<http://qr.free.kaywa.com/?l=1&s=3>

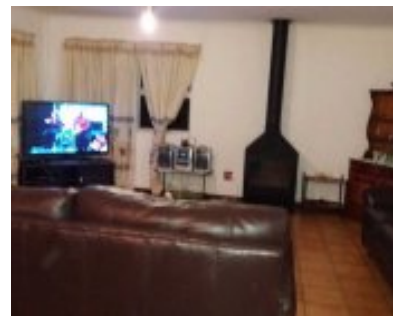
<http://southernstaying.co.za/>

Betty's Bay Accommodation Sleeps 10 QEG982609

South Africa » Western Cape » Betty's Bay

Type	Ref. Id	Living Area	Total Area	Price
Holiday Accommodation per Night	Ref - QEG982609	0 sq. m	0 sq. m	2,240 ZAR/night

Bedrooms	Bathrooms	Floor/floors	Furnished	Listing Date
5	2	—/—	yes	05 April 2017



Description

PLEASE NOTE- NO PARTIES ALLOWED NO PETS ALLOWED Neptune is a double story house close to the Stoney Point Penguin Reserve and to Draadbaai. Only a 10 minutes walk to Silversands Beach. * 5 bedrooms (4 double beds, 2 single beds) * 2 Bathrooms (main ensuite- shower, toilet and basin) 2nd bathroom down stairs with bath, toilet and basin * Kitchen equipped with Fridge/Freezer, microwave, stove etc * Open Plan lounge with fireplace * Lounge area down stairs- adjacent to 2 rooms * Braai on deck * Braai behind house * Garages DSTV DISH- bring own decoder and card

Pricing

Default Price	Cleaning Fee	Deposit	Max. Occupants	Min. Stay
2,240 ZAR/night	450 ZAR	1,500 ZAR	10	2 nights

Address

Betty's Bay
Western Cape, South Africa

Image not found
<http://maps.google.com/>



Contact Details

Name:	Southern Staying Info
Telephone:	011 054 4444
Location:	712 Voortrekker Rd, Brakpan, Gauteng, South Africa
Languages:	English / Afrikaans
Website:	http://www.southernstaying.co.za